



SOLAR STIK®

Category: Power Generation

Solar Endurance 360W BR

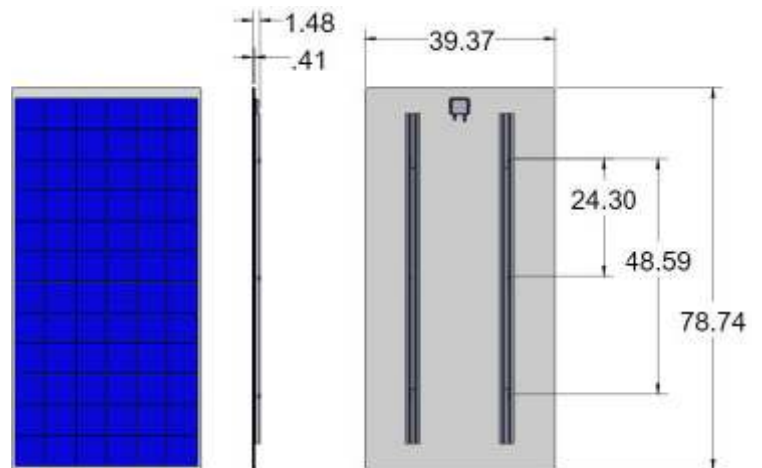
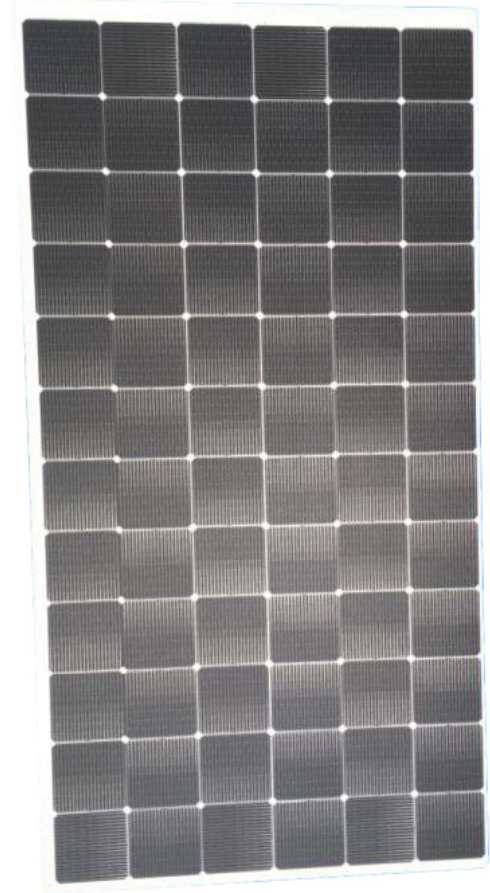
Item # TBD

Superior Technology

The Solar Endurance 360 BR is a low-weight rigid panel series that's made to last. With improved, durability, reliability, and power generation, the Solar Endurance 360 BR is able to withstand high wind speeds of up to 190 mph. Its superior shade-tolerant design offers optimized power performance in low-sun angles and partial shading conditions. Utilizing an array of advanced monocrystalline silicon cells, this panel improves on its thermal and electrical efficiency, while reducing reflection losses and degradation that standard bus bar technology is prone to.

Advanced Resilience

The Solar Endurance BR includes two back rail configurations: 2-Rail and 3-Rail. These high-tolerance rails have been field-proven to provide the structural integrity required to resist wind speeds of 150 mph and 190 mph respectively when properly configured. Additionally, the Solar Endurance BR is weather resistant up to IP67 rating standards, giving the panels dependable resistance to dust, water and similar common weather hazards.





SOLAR STIK®

Category: Power Generation

Solar Endurance 360W BR

Item # TBD

General

Maximum System Voltage (DC)	600 V
Warranty	15-years (90% Power Output @ 25 years)

Solar Panel (@ 77 °F/25 °C)

Max Power (Pmax)	360 W (-0% / +3%)
Rated Voltage (Vmp)	37.4 V (± 10%)
Open Circuit Voltage (Voc)	48.0 V (± 10%)
Rated Current (Imp)	9.8 A (± 10%)
Short Circuit Current (Isc)	10.0 A (± 10%)
Cell Type	Mono-crystalline silicon PERC (G1)
Cell Efficiency (%)	≥ 22%

Environmental

Maximum Wind Load	<ul style="list-style-type: none">• 150 mph (2 back rails to 2 mounting rails)• 190 mph (3 back rails to 3 mounting rails)
Intrusion Protection	IP67

Weights and Dimensions (L x W x H)

Solar Panel Weight	55 lb (2 rails) / 61 lb (3 rails)
Solar Panel Dimensions	78.74 x 39.37 x 0.2 in (panel only) / 1.18 in (panel + rail)

Connections

Jbox / Termination	Rear mount Jbox / PV cable with MC4 connectors
--------------------	--

