



SOLAR STIK®

Instruction Manual for Reprogramming the DSE 3110



DISTRIBUTION STATEMENT A. Approved for public release; distribution is unlimited.
Version 1.0
Updated:20181008

Scope

These instructions are for programming the Deep Sea Electronics 3110 controller (DSE 3110) on the Yanmar YDG 5500 Generator with RsEK.

Tools Required

- USB A to USB B cable
- #2 cross tip screwdriver
- PC with DSE Configuration Suite installed

Materials Supplied

- DSE 3110 Configuration file, 19-0401001_programming_[YYMMDD].dse

Instructions

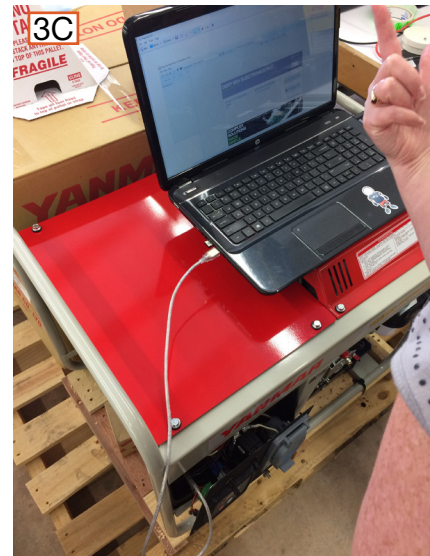
1. Install the DSE Configuration Suite software on a PC. The software download is available at no cost at the following: <https://www.deepseapl.com/genset/manual-auto-start-control-modules/dse3110/software>



2. Use a #2 cross tip screwdriver to remove four (4) fasteners (orange circles) that secure the module to the generator. **Carefully** pull the module forward about six inches from the generator.
3. Turn on generator power switch.

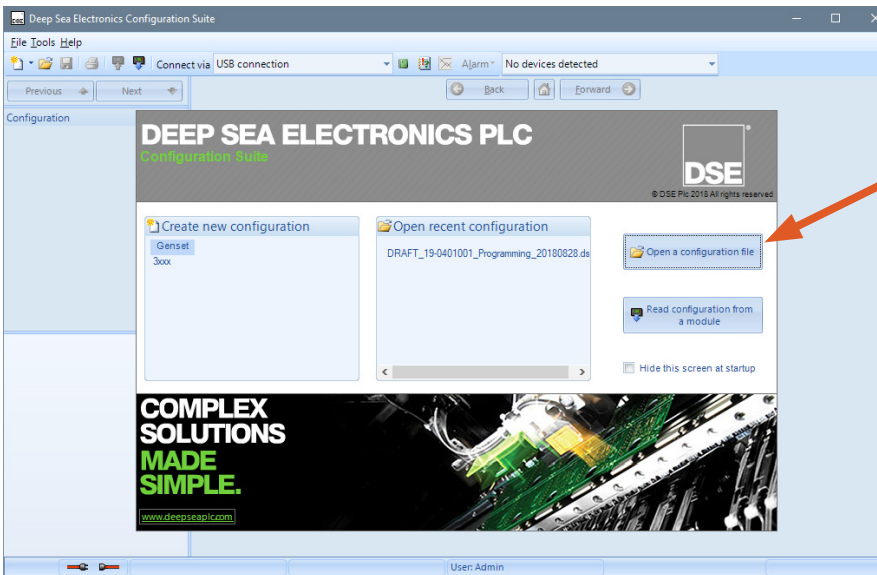
4. Connect the laptop to the DSE 3110 with a USB A to USB B cable (3A and 3C). The USB B port is on the DSE 3110 (3B, orange box). (**Note:** This cable is commonly used to connect printers to computers.)

3A



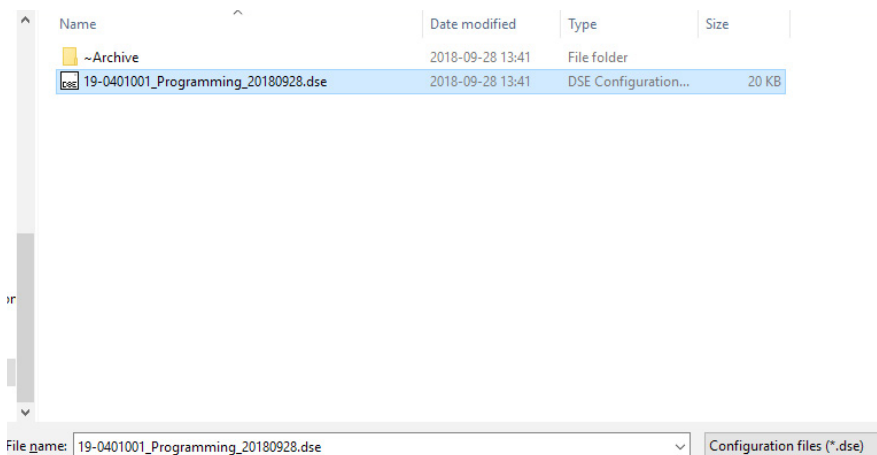


5. The “USB Connected” symbol will appear on the DSE3110 screen when it is connected to the laptop.

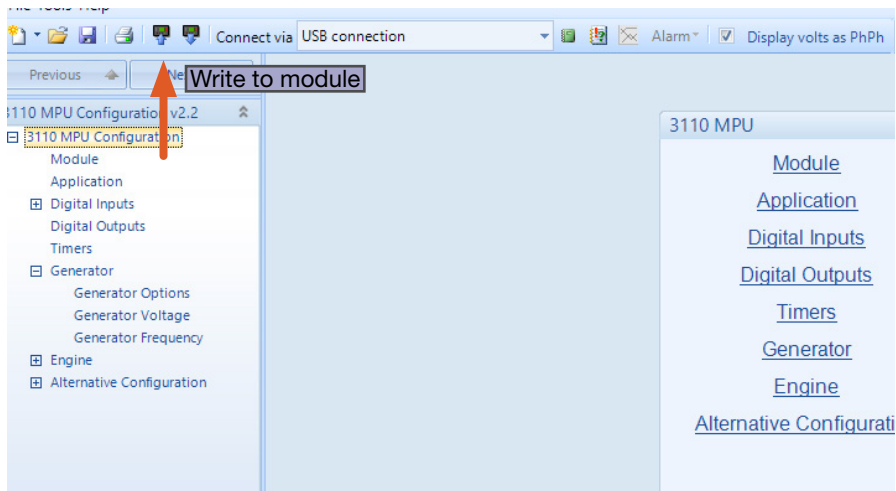


6. Open the DSE Configuration Suite software on the laptop. Click “Open a configuration file” (arrow).

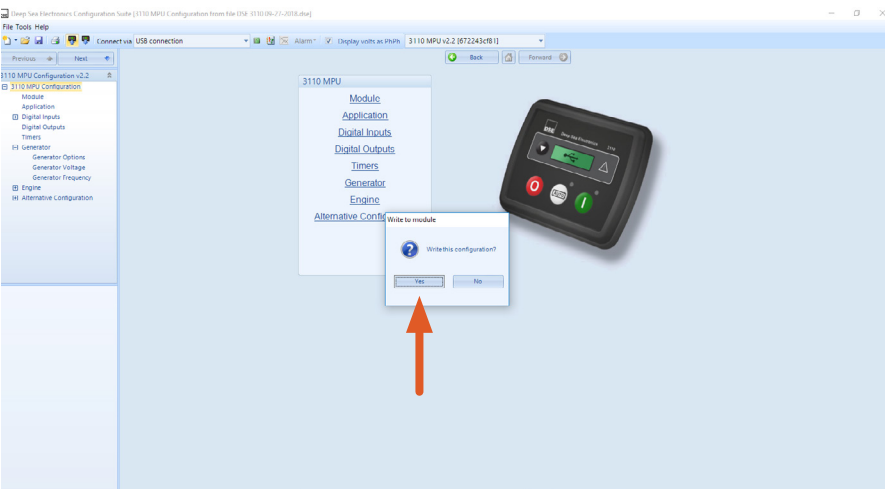
Note: If the software presents a prompt to upgrade the firmware on the DSE 3110, do so.



7. Navigate to the 19-0401001_programming_[YYMMDD].dse file (supplied by Solar Stik). Click to open this file. (**Note:** The file name shown here is only as an example. File names will vary.)

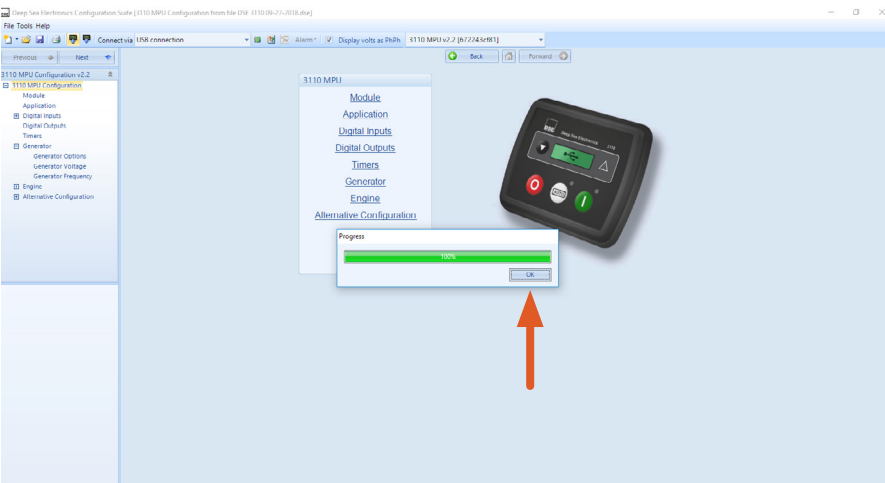


8. Click the “Write to module” icon (arrow). (**Note:** Two similar icons are side by side. Click the one on the left.)



9. This screen will appear with the prompt: “Write this configuration?”

Click “Yes” (arrow).



10. Click “OK” (arrow) after the green progress bar reaches 100%. The new file configuration has been uploaded.

11. Disconnect the USB cable from the DSE 3110.

12. Turn off the generator power switch.

13. Reinstall the module onto the generator. It may help to gently adjust the cables that are fed through the back of the control panel enclosure to make room for the control panel.